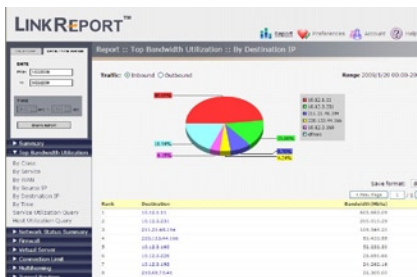
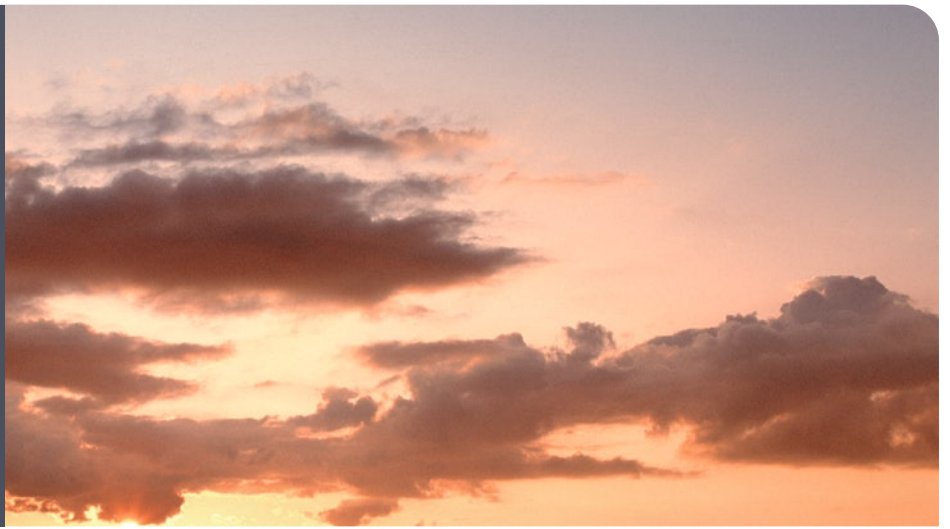


LinkReport

WAN Traffic Management



The premium network bandwidth analyzer

LinkReport: The Traffic Analysis Tool

LinkReport provides the most comprehensive suite of network application and network performance monitoring tools available for measuring, managing, and improving the end-to-end application performance that offers a 360-degree view of the entire network. LinkReport allows network administrators to leverage your investment towards your Business Intelligence solutions, thus saving money on other complicated and unnecessary network analysis solutions.

The Best Companion for AscenLink

LinkReport is AscenLink's eBusiness solution, bundled with pre-built reports, statistical logs, real-time graphics and on-site professional services, allowing easy and seamless analysis of bandwidth traffic. LinkReport expands the functionality of AscenLink by offering the flexibility to perform additional analysis on network data, such as data grouping, connection analysis and combining built-in firewall to get total network transparency.

Unique Features of LinkReport

- User friendly and intuitive web-based interface
- Effortlessly integrates AscenLink towards maximum performance
- Analyzes AscenLink's usage and records events (including record of WAN link failure and bandwidth statistics)
- Provides Top N analytical reports to allow for effective management of WAN resources
- Built in firewall and imposes connection limits to further enhance network security
- Reporting and recording network data based on any flexible management style or company policy.

Functions of LinkReport

- Top N statistics for bandwidth resources
- Top N statistics for services
- Top N statistics for classes
- Top N statistics for source IP addresses
- Top N statistics for destination IP addresses
- Statistics for outbound and inbound traffic
- Statistics for a specific time period, or on an hourly/daily/monthly basis
- Statistics of failure for different WAN links
- Statistics on bandwidth usage for different WAN links
- Statistical analysis on Multihoming status



- Statistical analysis on Firewall status
- Statistical analysis on Virtual Server's access status
- Statistical analysis on Connection Limit status
- Statistical analysis on Tunnel Routing status
- Statistical analysis on WAN Quota status
- Support for multiple users with varying access control
- Provides regular monthly/weekly/daily e-mail reports for system administrators
- User friendly UI with multi-language support

System Requirements

- IBM x86 PC (P4 2.0G or above)
- 512MB RAM
- 100 GB HD
- OS:Windows 2000/XP with IE v6.0+
- Others:AscenLink (requires firmware of AscenOS 3.2 or above)

Americas

Corporate Headquarters

Xtera Communications - USA
500 W. Bethany Drive, Suite 100
Allen, TX 75013
USA

T +1 972 649 5000

F +1 972 747 0344

Europe

EMEA (UK)

Xtera Communications - UK
Bates House, Church Road
Harold Wood, Romford
Essex RM3 0SD
UK

T +44 (0) 8701 417 237

F +44 (0) 1708 335 425

Asia

Taiwan

Xtera Communications - Taiwan
4F, No.102
Guangfu S.Road
Da-an District
Taipei 10612
Taiwan

T +886 2 6636 0550

F +886 2 8772 2262

E info@xtera.com

www.xtera.com

