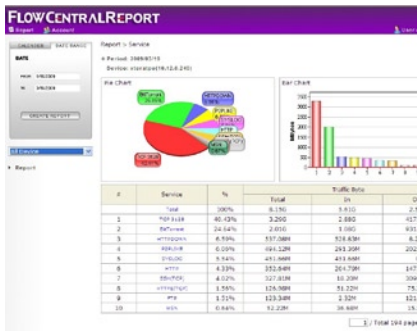
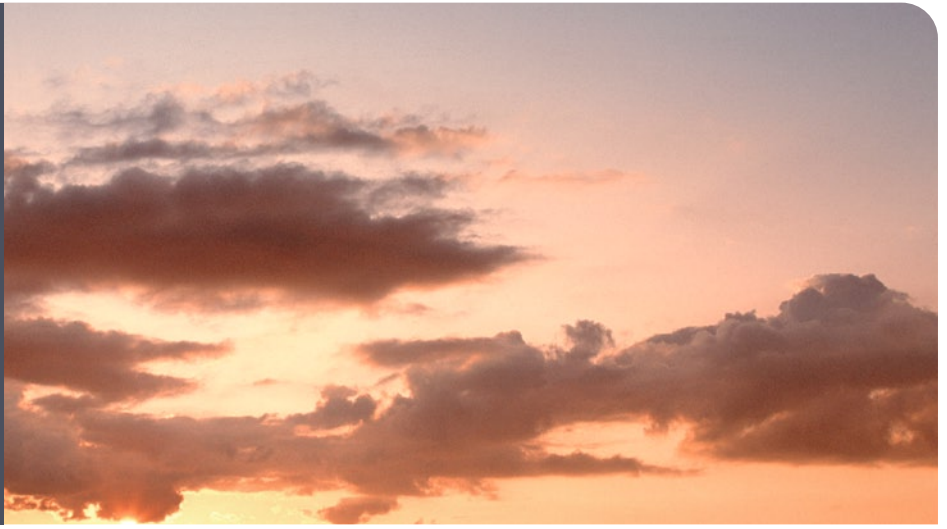


# FlowReport

## WAN Traffic Management



## The intergrated network monitor

### FlowReport: The Traffic Analysis Tool

FlowReport is a powerful yet easy to use network monitor for Windows-based platforms. It measures, manages, and improves the end-to-end application performance and offers a 360-degree view of the entire network. FlowReport delivers an unsurpassed return on investment for its owners as it is unique in its ability to provide a complete and unified bandwidth management solution for businesses.

### The Best Companion for AscenFlow

FlowReport is AscenFlow's eBusiness solution, bundled with pre-built reports, statistical logs, real-time graphics and on-site professional services, allowing easy and seamless analysis of bandwidth traffic. FlowReport expands the functionality of AscenFlow by offering the flexibility to perform additional analysis on network traffic, such as connection analysis and bandwidth assessment to get total network transparency.

### Unique Features of FlowReport

- User friendly and intuitive web-based interface
- Effortlessly integrates AscenFlow towards maximum performance
- Analyzes AscenFlow's usage and records events (including record of hardware statistics and bandwidth statistics)
- Provides Top N analytical reports to allow for effective management of bandwidth resources
- Detects abnormal bandwidth usage to further enhance network security
- Reporting and recording network data based on any flexible management style or company policy.

### Functions of FlowReport

- Top N statistics for bandwidth utilization
- Top N statistics for services
- Top N statistics for classes
- Top N statistics for source IP addresses
- Top N statistics for destination IP addresses
- Statistics for outbound and inbound traffic
- Statistics for a specific time period, or on an hourly/daily/monthly basis
- Statistical analysis on Connection Limit status
- Statistical analysis on Bandwidth Quota status
- Query for bandwidth utilization of service and host



- Drill-down statistical analysis
- Support for multiple users with varying access control
- Provides regular monthly/weekly/daily e-mail reports for system administrators
- Support doc, rtf, csv and xml formats
- User friendly UI with multi-language support

## System Requirements

---

- IBM x86 PC (P4 2.0G or above)
- 512MB RAM
- 100 GB HD
- OS:Windows 2000/XP with IE v6.0+
- Others:AscenFlow (requires AscenFlow V1.6 or above)

### Americas

#### Corporate Headquarters

Xtera Communications - USA  
500 W. Bethany Drive, Suite 100  
Allen, TX 75013  
USA

T +1 972 649 5000

F +1 972 747 0344

### Europe

#### EMEA (UK)

Xtera Communications - UK  
Bates House, Church Road  
Harold Wood, Romford  
Essex RM3 0SD  
UK

T +44 (0) 8701 417 237

F +44 (0) 1708 335 425

### Asia

#### Taiwan

Xtera Communications - Taiwan  
4F, No.102  
Guangfu S.Road  
Da-an District  
Taipei 10612  
Taiwan

T +886 (0)2 6636 0550

F +886 (0)2 8772 2262

E [info@xtera.com](mailto:info@xtera.com)

[www.xtera.com](http://www.xtera.com)

